

Key City
Veterinary Clinic

New Puppy Care

Congratulations on the new addition to your family! We are proud to provide a puppy care guide designed to provide educational content that sets you and your new best friend up for success, both in the home and at our hospital. Our services focus on prevention as we believe it's the greatest gift we can give our canine family members.





Key City Veterinary Clinic

KEY CITY VETERINARY CLINIC

318 E. South 11th St.,
Abilene, TX 79602

Phone: (325) 672-7801
keycityvet.com
www.facebook.com/keycityvet
Insagram: @keycityvet

*Quality Veterinary Care in a
Fun Friendly Atmosphere!*

CONVENIENT HOURS

Monday: 7:30am – 5:30pm
Tuesday: 7:30am – 5:30pm
Wednesday: 7:30am – 5:30pm
Thursday: 7:30am – 5:30pm
Friday: 7:30am – 5:30pm
Saturday: Closed
Sunday: Closed

*For your Convenience we Accept: Cash, Checks,
Visa, MasterCard, Discover, and American Express.*

ASK ABOUT CARE CREDIT & SCRATCH PAY!



*Our dedicated team is here not just to treat
your pet when they're unwell, but also to
empower you with the knowledge and
resources needed to keep your furry friend
happy and thriving for many years to come.*

*We provide quality care
for dogs and cats.*

**GO TO OUR
WEBSITE WITH
JUST ONE
CLICK!**



WE OFFER MANY VALUABLE SERVICES FOR YOUR PET:

- Wellness Exams & Vaccinations
- Microchipping
- Surgery
- Dental Care
- Boarding
- Dermatology
- Ultrasounds
- Diagnostics
- Health Certifications

Check out our website for a more detailed
description of available services at

www.keycityvet.com





Puppy Service Breakdown

AN INDIVIDUALIZED RECOMMENDATION FOR ALL SERVICES AND PREVENTATIVES WILL BE MADE BY YOUR VETERINARIAN BASED ON YOUR PUPPY'S MEDICAL HISTORY, CURRENT MEDICAL NEEDS, BREED, SIZE, ENVIRONMENT, AND AGE.

Vaccine/Service Completed	1 st Visit 6-8 Weeks	2 nd Visit 9-11 Weeks	3 rd Visit 12-14 Weeks	4 th Visit 15-17 Weeks	5 th Visit 18-20 Weeks	6 th Visit 21-23 Weeks
DA2PP						
DA2PP+L4						
Rabies (Required by Law)						
Bordatella						
RSV						
BiV Flu						
Deworming						
HW Prevention						
Flea & Tick						
Intestinal Parasite Screening						



PUPPY SERVICE BREAKDOWN

RABIES

Protects against brain inflammation, behavioral changes, paralysis, and fatality due to the deadly virus, Rabies. Vaccination against rabies is legally required as it is zoonotic, meaning contagious to people. Rabies is present in our area, making it that much more important to vaccinate against.

DA2PP

Often referred to as the Canine Distemper Vaccine, it protects against serious diseases, including Canine Distemper, Adenovirus (Hepatitis), Parainfluenza, and Parvovirus.

CANINE DISTEMPER

A highly contagious viral disease transmitted through bodily fluids & mother dogs to puppies, leading to seizures, respiratory issues, tooth decay, foot pad hardening, & skin irritations, with a mortality rate of around 90%. Distemper is common in our area, making it that much more important to vaccinate against it.

PARVOVIRUS

A highly contagious viral illness transmitted through bodily fluids from infected dogs, often resulting in severe bloody diarrhea, vomiting, and fever, with a rapid progression that can lead to death within 1 to 2 days. Parvo is very common in our area, making it that much more important to vaccinate against it.

LEPTOSPIROSIS

Protects against the bacterial infection Leptospirosis causing severe kidney and liver damage in pets. Lepto is zoonotic and is recommended for all dogs, as all dogs are at risk. Lepto is fatal if it is not treated early enough and can cause life long organ damage.

BORDETELLA

Protects dogs against kennel cough, a contagious respiratory disease characterized by a dry, hacking cough, with potential progression to bronchitis and pneumonia if left untreated. Bordetella is highly recommended for dogs that are groomed, boarded, or travel.

RSV (RATTLESNAKE VACCINE)

The rattlesnake vaccine stimulates the immune system to produce antibodies that neutralize rattlesnake venom, reducing the severity of symptoms in case of a bite.

BIV FLU (BIVALENT INFLUENZA)

Protects against both strains of the influenza virus, aiding in the prevention of respiratory illness and reducing the risk of transmission to other dogs. Highly recommended for dogs that travel, are in performance, or show.

VACCINE REACTIONS

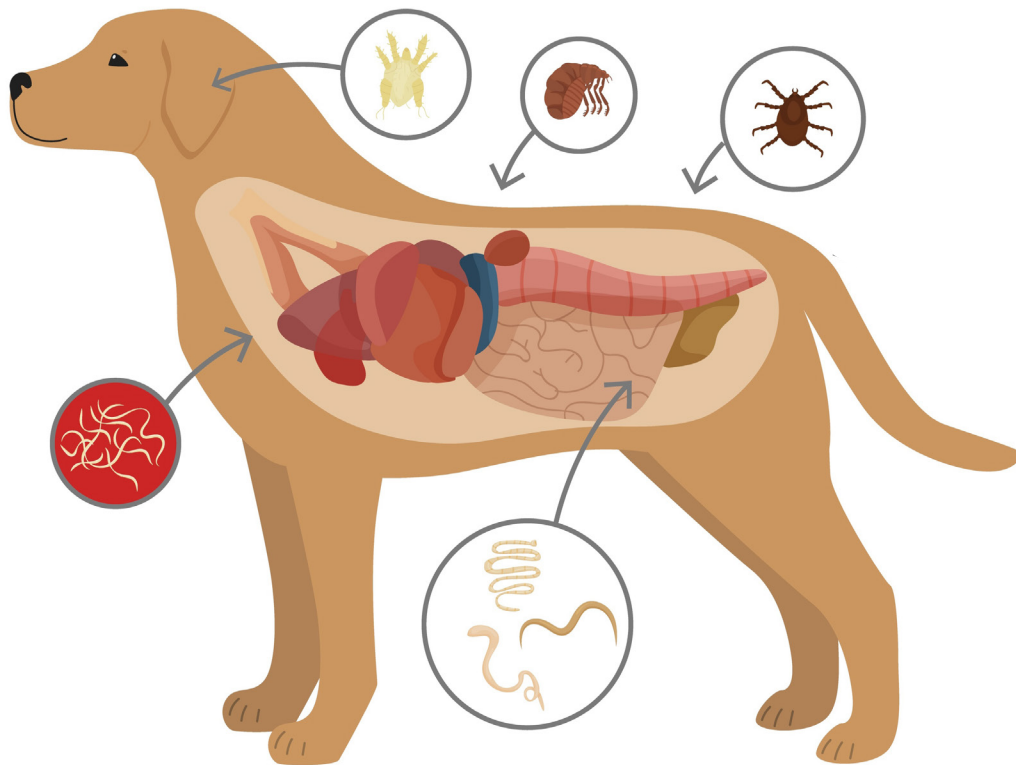
After vaccination it is common to have the following symptoms. These signs are common and usually resolve within 24 hours: Mild Lethargy, Reduced Appetite, Soreness/Swelling at the injection site. Please contact us if any of the reactions below occur. It is recommended to watch your canine companion for these reactions for up to 48 hours after vaccinations.

- Generalized Weakness
- Diarrhea Vomiting
- Hives
- Fever
- Vomiting
- Facial Swelling



PARASITES AT A GLANCE

Parasites can cause a variety of health problems for your pet and may even result in death. One of the biggest concerns is the potential for them to spread to humans. The illustration lists common parasites found in cats & dogs, signs, and complications of infestations, and whether or not they can spread to humans – known as zoonotic parasites.



FLEAS



MITES



TICKS



HEARTWORMS



TAPEWORMS

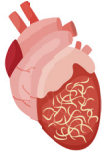


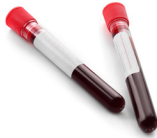




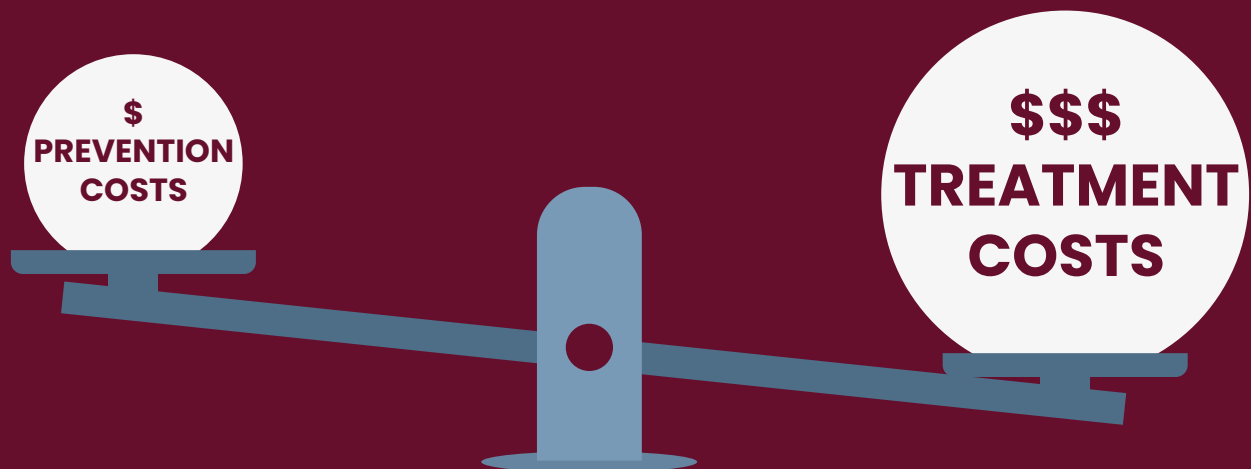
ROUNDWORMS



Veterinarians divide parasites into two main categories—external (ectoparasites) and internal (endoparasites). Endoparasites, like heartworm, are typically harder to detect but cause more severe disease.




Parasites Breakdown

	HEARTWORM	
Symptoms	May not exhibit signs until late in the course of the disease. Coughing, difficulty breathing, panting, exercise intolerance, decreased activity level, and sudden death.	
Transmission	Through the bite of an infected mosquito.	
Detection	Requires a yearly blood test.	
Prevention	Oral heartworm prevention involves administering monthly tablets or chews to dogs to protect against heartworm disease, while Proheart6 is an injectable heartworm prevention given every six months, offering longer-lasting protection against heartworms with just two doses per year.	
Treatment	Involves a multi-step process, including injections to kill adult worms, antibiotics to prevent secondary infections, and strict rest to minimize complications, with follow-up monitoring to ensure complete recovery from this life-threatening parasitic infection. Treatment is difficult on the body and can last several months.	



Prevention is cheaper than treatment

Parasites Breakdown

	FLEAS	TICKS	MITES
Symptoms	 <p>Mild to severe itching, scratching, biting, and chewing. Flea saliva hypersensitivity or allergy and resulting skin problems.</p>	 <p>Mild, local irritation to severe anemia. Transmission of other diseases to animal and humans: Lyme disease, Rocky Mountain spotted fever, and ehrlichia, among others.</p>	 <p>Itching, hair loss, dandruff or crusty lesions, and bleeding or oozing skin.</p>
Transmission	Through direct contact with infested animals or environments.	Transfer onto hosts when they are walking through long grass, bushes and brush.	Direct contact with infested animals or environments
Detection	Examination of the animal for adult fleas, flea dirt, or small black specks of dried flea feces. A blood test can detect a flea allergy.	Examination of the animal.	Examination of the animal and skin scrapings.
Prevention	Oral medications, such as chewable tablets, work systemically to kill fleas when ingested, while topical treatments, applied to the skin, provide localized protection by killing fleas on contact.	Topical treatments, collars, and oral medications designed to repel and kill ticks, combined with regular grooming and environmental management to reduce tick habitats.	Regular grooming, maintaining a clean living environment, and using veterinary- recommended preventive oral medications.
Treatment	Using flea control products such as shampoos, topical treatments, or oral medications to eliminate fleas. Followed by preventive measures to avoid reinfestation.	Carefully removing the ticks using tweezers, ensuring to grasp the tick as close to the skin as possible, followed by disinfecting the bite area and, if necessary, administering medication to prevent tick-borne diseases.	Using medicated shampoos, spot-on treatments, or oral medications prescribed by a veterinarian to eliminate the parasites and alleviate any discomfort, often accompanied by thorough cleaning of the dog's living environment to prevent reinfestation.



NUTRITION

Making sure your pet eats well is crucial for their overall health.

BEST PRACTICES

- Consider your puppy's breed & size
- Feed premium puppy food until 12-18 months
- Follow the bag for feeding guidelines
- Store the food according to the manufacturer guidelines
- Use your dog's food as training treats
- Do not purchase "grain free" unless there is a known allergy or discussed with a veterinarian
- Feed several smaller meals a day, reducing the number of meals to two when age appropriate
- Look for AAFCO on the nutritional label, certifying that it meets higher standards than what is required by law

Dog Food Brands We Recommend!





TRAINING YOUR NEW PUPPY

Just like children, no two dogs are the same. Some may be quick learners, while others may be a bit more stubborn and require more time. The most important thing to remember with training is that everybody in the family must be consistent. Please remember that you have about two seconds during or after a behavior to reinforce and that the type of reinforcement should align with your dog's individual temperament.



HOUSE TRAINING – DOS

- 🐾 Take your puppy outside frequently through the same door & to the same location.
- 🐾 Reward each time they go potty with a treat or toy - whatever they prefer.
- 🐾 Verbally praise your dog with phrases like, "good potty."
- 🐾 If an accident happens, interrupt your dog mid-potty with a loud noise and quickly move them outside.
- 🐾 Associate the word, "outside" with going to the designated potty door.
- 🐾 Utilize puppy play pens, a crate, and or a leash tied to you when puppy is inside and not being actively watched / interacted with.

HOUSE TRAINING – DON'TS

- 🐾 Do not continue telling them to, "go potty" when outside.
- 🐾 Never hit your dog or rub their nose in the pee when they have an accident as this can be very counter productive and create additional issues.
- 🐾 Do not leave your puppy unattended outside, you need to time praise and reward correctly to be effective.

CRATE TRAINING

A crate should be your dog's safe place, if set up properly. It is important that your puppy learns to be calm and comfortable in a crate for veterinary visits, exercise restriction due to illness, traveling, and potential emergencies like natural disasters.

CRATE TRAINING – DOS

- 🐾 Use positive reinforcement to introduce your new puppy to his/her crate starting with feeding time.
- 🐾 Use the crate as a place for "down time" if you or your other animals need a break.
- 🐾 Ensure the crate is in a comfortable location, has a bed, blankets or towels (if your puppy won't eat them).
- 🐾 Use Frozen Kongs filled with peanut butter, canned food or kibble to keep your dog happy and busy while you're away.
- 🐾 Make sure all latches on crate are closed/locked

CRATE TRAINING – DON'TS

- 🐾 Never use the crate as a source of negative reinforcement / discipline.
- 🐾 Use caution with using bones or toys in crate when your dog is unsupervised if it can be ingested.

RECOMMENDED TRAINING RESOURCES

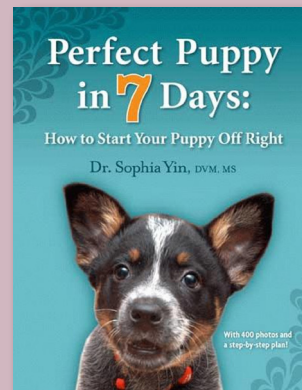
We highly recommend enrolling your puppy in a training class. Even if you have been through a class before or trained several dogs, your puppy has not. These classes are an immense learning experience for your puppy to become socialized in a new environment with other dogs and people. In addition, you can learn new training tricks that might help you in the resources below.



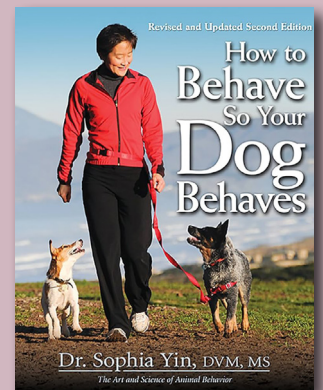
FEARFREE
HAPPYHOMES.COM



HUMANE
SOCIETY.ORG



"PERFECT PUPPY
IN 7 DAYS"
DR. SOPHIA YIN



"HOW TO BEHAVE
SO YOUR DOG
BEHAVES"
DR. SOPHIA YIN



TRAINING YOUR NEW PUPPY

Many dog breeds were developed for some functional purpose (guarding, herding, hunting, etc.) yet few dogs perform these activities today. It is important to provide enrichment that is suitable to your individual puppy's breed, energy level, chewing strength, age, and behavioral tendencies.




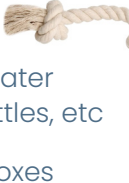
A lack of enrichment can lead to...

- 🐾 Hyperactivity
- 🐾 Destructive Chewing
- 🐾 Compulsive Disorders (ex: chasing shadows)
- 🐾 Acral Lick Dermatitis
- 🐾 Certain Forms of Aggression

Enrichment Activities

- 🐾 Cardboard Box w/ Food Inside (they get to tear it open)
- 🐾 Scatter food throughout grass or house
- 🐾 Doggy Sandbox
- 🐾 Doggy Pool
- 🐾 Training Sessions (keep short & positive for puppies)
- 🐾 Dog Sports (fly ball, agility, tracking, Frisbee, etc.)

Enrichment Products

- 🐾 Lick Mat 
- 🐾 Stuffed Kong
- 🐾 Wobble Treat Kong
- 🐾 Food Puzzles 
- 🐾 Snuffle Mat
- 🐾 Treat Dispenser Balls
- 🐾 Bones* 
- 🐾 Balls (size appropriate to avoid choking)
- 🐾 Rope Toy 
- 🐾 Five Gallon Water Jugs, pop bottles, etc
- 🐾 Cardboard Boxes

Foods for Enrichment

- 🐾  Fruits & Veggies
- 🐾  Dog Food
- 🐾  Peanut Butter
- 🐾  Bone Broth
- 🐾  Pumpkin Puree
- 🐾  Plain Yogurt

*To be safe for your dog's teeth, we recommend the bone has some "give" to the surface like rubber Kong bones or certain Nylabones.



HOW TO BRUSH YOUR DOG'S TEETH



DAILY BRUSHING

1. Start slowly with handling your dog's mouth by lifting the lips and touching the teeth and gums with your fingers.



2. Once your dog is good about having the mouth handled, start putting a little toothpaste on the gums to get him/her used to the taste. You **MUST** use a dog/cat toothpaste as it does not contain fluoride or xylitol (which are highly toxic to pets), does not foam, and has a more appealing taste than human toothpaste. Enzymatic pet toothpastes are best because the enzymes can help dissolve the plaque.



3. After they are used to the toothpaste, progress to brushing with a soft brush. Concentrate on the canine teeth and the upper molars. You do not need to brush the inside of the teeth; they are usually kept clean by the roughness of the tongue.

Dog dental health is part of whole health and should be prioritized as such. We recommend brushing daily, purchasing and using bones and toys that are safe and effective for your dog's teeth, and feeding premium dog food.

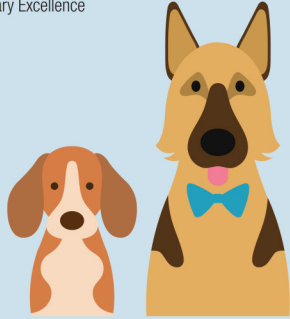


VOHC

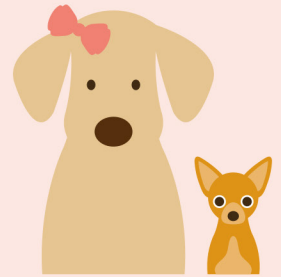
Look for the VOHC seal of approval when purchasing products for your furry best friend!

VOHC (Veterinary Oral Health Council) products for dogs are specifically formulated to promote good oral hygiene and prevent dental issues in our furry companions. These products, ranging from dental chews to water additives, undergo rigorous testing and evaluation by veterinary dental experts to ensure their efficacy in reducing plaque and tartar buildup, combating bad breath, and maintaining overall dental health.

WHEN SHOULD MY DOG BE NEUTERED OR SPAYED?



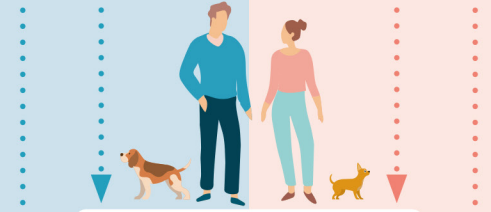
MALE



FEMALE

Is your dog a **male** or **female**?

How much do you think your dog will weigh when fully grown?



Neuter at 6 months of age

Spay before first heat cycle (5–6 months of age)

Neuter after growth stops (9–15 months of age)

Spay between 5-15 months of age

WHY IS THE RECOMMENDED AGE RANGE SO WIDE?

Different breeds stop growing at different ages.

Delaying neutering until after growth stops may decrease the risk of certain cancers and bone, ligament and joint problems in some breeds of male dogs.

In addition to differences in the age of maturity among breeds, there are **competing risks** depending on your female dog's breed and lifestyle.

WHAT ARE THE COMPETING RISKS?

Spay before first heat cycle (5–6 months of age)

- ↓ risk of breast cancer
- Prevents unwanted litters

Spay after growth stops, but likely after first heat cycle (5–15 months of age)

- ↑ risk of breast cancer
- ↓ risk of certain other cancers and bone, ligament and joint problems
- May ↓ risk of urinary incontinence

Talk to your veterinary team about how this evolving information can be applied to your dog as an individual.



SIGNS YOUR DOG NEEDS TO SEE A VET

SIGNS OF DISCOMFORT OR PAIN

SEIZURES

ITCHING OR LICKING THEMSELVES A LOT

SUSPECTED POISON INGESTION*

BREATHING DIFFICULTIES

VOMITING OR DIARRHEA

CHANGE IN APPETITE

SWOLLEN ABDOMEN

COUGHING

SUDDEN WEIGHT LOSS

LETHARGY

BLOODY STOOLS OR VOMIT

CHANGE IN DRINKING HABITS

LIMPING

BLOATING

EXPERIENCED TRAUMA

PALE GUMS

These symptoms are intended to provide direction outside of standard wellness and prevention needs. Please call ahead before coming in whenever possible.

*If you suspect your pet has ingested something poisonous, please bring in what you suspect they ingested if possible.



PET RESOURCES

PET INSURANCE

If you are interested in purchasing pet insurance for your puppy, we recommend finding the policy that best fits your needs by utilizing pet insurance comparison resources:



<https://www.pawlicy.com/>



<https://www.nerdwallet.com/l/pet-insurance>



<https://findinsurance.com/pet-insurance>

POISON CONTROL HOTLINE

If you suspect your pet has ingested something poisonous and you are unable to reach our team, call the ASPCA 24/7 Poison Control Hotline at 888-426-4435, \$95. Or Pet Poison Helpline at 855-764-7661, \$85.

LOCAL EMERGENCY VETERINARY HOSPITAL

If you have an emergency after-hours, please contact:

The Emergency Veterinary Clinic in Abilene

909 Industrial Blvd. Abilene, Texas 79602

325-691-1504

HOSPITAL PHARMACY

Did you know that medications, foods, and additional items sold through other online sites may be counterfeit, expired, or have not been labeled, stored, or shipped correctly? This can and has led to consequences for pets, such as:

- Toxic products that may result in illness or even death
- Medications that are ineffective in treatment
- Catching preventable diseases

Our online pharmacy...

- Is FDA regulated
- Meets the Highest Industry Security Standards
- Is Manufacturer Guaranteed
- Integrates with your Pet's Hospital Records
- Offers Home Delivery
- Competitively Priced



Scan the QR code to visit our Online Pharmacy

“Happiness is a warm puppy.”
– Charles Shultz

